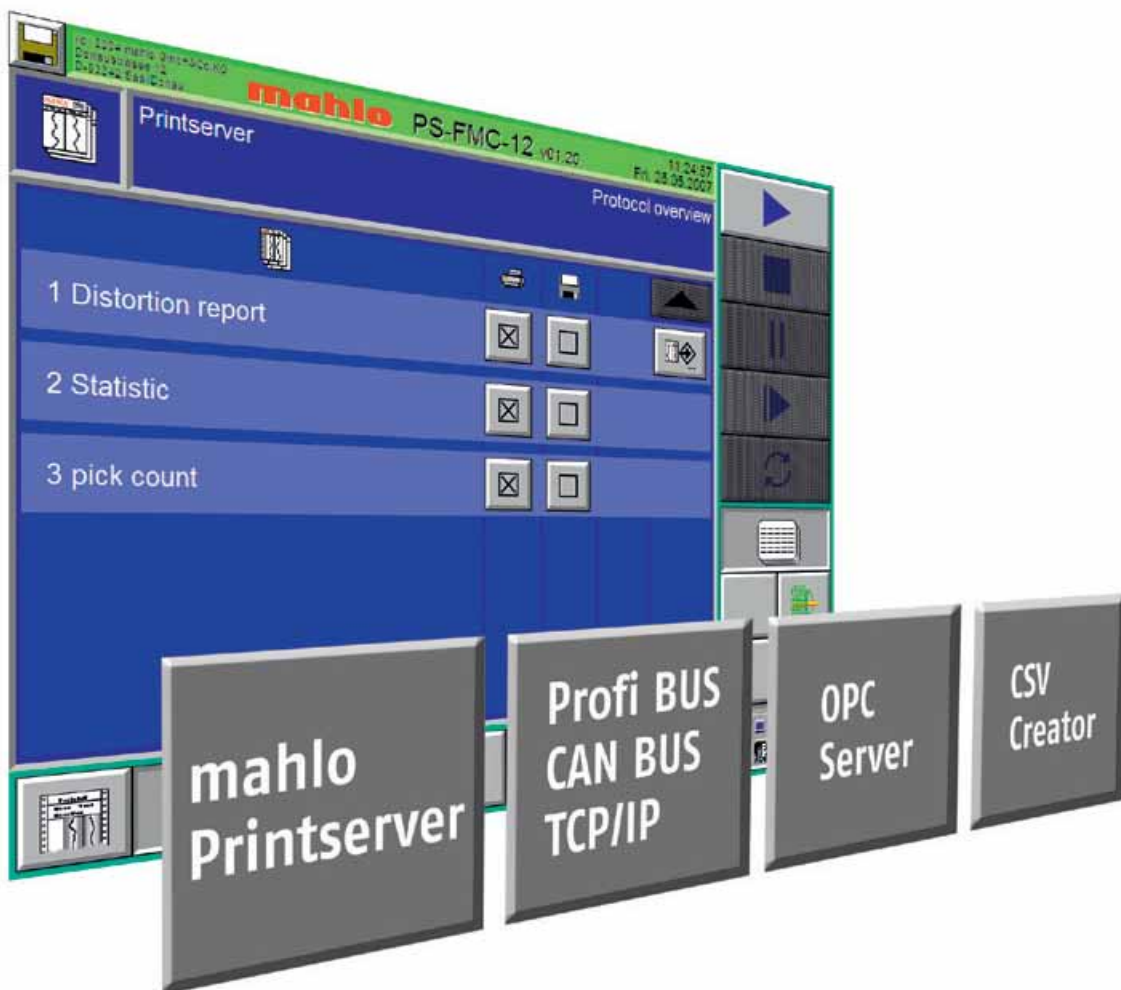


DATAMANAGEMENT

Data logging, archiving, interfaces



DATA MANAGEMENT





TEXTILES



NONWOVENS



PAPER



PLASTICS

DATA MANAGEMENT

Data logging, archiving, interfaces

In modern manufacturing plants, the storage and filing of essential production-related data has become of increasing significance. Only by doing so can faults be permanently identified and subsequently avoided. Manufacturing processes become more efficient and products less likely to give rise to complaints.

Product highlights

- ✓ Data logging
- ✓ Storage
- ✓ Filing
- ✓ Interfaces to bus-systems

Customer-benefits

- ✓ Retracement
- ✓ Analysis
- ✓ Statistics
- ✓ Fault avoidance
- ✓ Process optimization

Mahlo® acknowledged more than ten years ago the sign of the times by designing and manufacturing a data-logging system.

This was quickly followed by the introduction of suitable interfaces to facilitate communication with higher-ranking, host-computer systems. Since then, the sudden leap in the development of computer, network and automation technology has also lead to a great deal of progress in and expansion of the functional-related features of Mahlo®'s range of products.

Mahlo® is able to offer and supply numerous aids for management of data. The flexibility of these tools enables the company to provide individual, tailor-made solutions to its customers' problems.

All the following data-management packages are available for series 12 appliances.

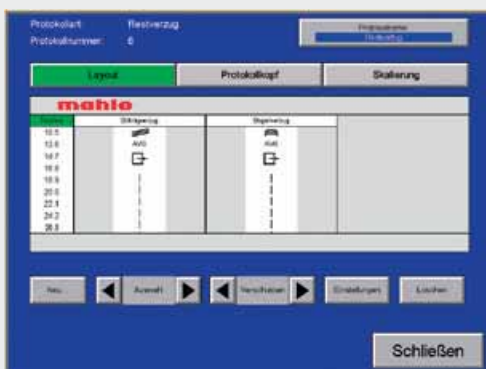
Host-computer interfaces

These are classic interfaces for providing up-to-date data to various bus-systems. They support the following systems:

Profibus | CanBus | TCP/IP | S3964 | DDE

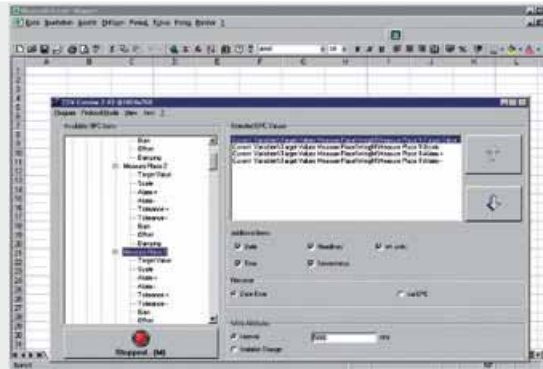
OPC interface / OPC-server

The OPC interface is a new, standardized software-automation link, supported by a number of visualization and automation tools. Mahlo® provides the requisite driver (OPC-server) for the computer (PC). Since data is communicated via Ethernet and TCP/IR, the cost of wiring is insignificant.



Print-server 12: data-logging options





CSV-Creator: data export



Print-server 12: face view

CSV-Creator

This is a Windows application which helps create files for recorded data. These can be analysed by either Microsoft Excel or Access. The user can select from the available data that which is to be logged and filed. An OPC-server is a prerequisite to this application.

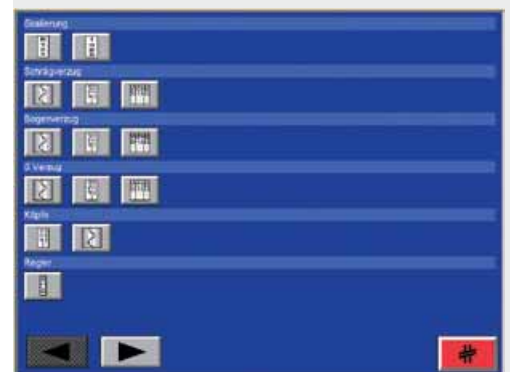
Print-server 12

The Print-server 12 is the answer to all those who want to print out manufacturing data at the processing machine, but do not wish to save data over a long period of time (for later analysis, etc.). It is installed directly in the machine's PC or IPC. In addition to pre-configured logs, individual types can be created according to choice.

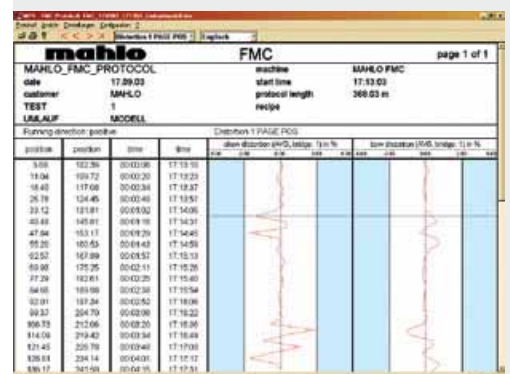
Enhanced Print-server 12

This Print-server 12 acts as a supplement to one already installed, and provides additional functions. The logged-data files are stored in an external server or PC and are archived therefore in digital form.

By means of additional „Print-server viewer“ software, recorded data can be opened, viewed and printed. If required, an Enhanced Print-server 12 can be supplied as a complete entity, inclusive of PC.



Print-server 12: log configuration



Enhanced print-server 12: log projected by the viewer

Monitoring and control systems, automation:

MAHLO® GUARANTEES QUALITY. WORLDWIDE, IN YOUR VICINITY.

Best-possible technical support and transfer of know-how are written in capital letters at Mahlo®. Thanks to an international network of agencies and service centres, customers have at their disposal competent support worldwide. We are there for you 365 days a year, 24 hours a day. Just get in touch with us!

- ✓ Over 40 service centres worldwide
- ✓ Prompt service and supply of spare parts within 24 hours
- ✓ Remote diagnostic system
- ✓ Service-hotline: +49-180-5062456



Overall management of Mahlo GmbH + Co. KG
and all subsidiary companies:
Robert Daul, Dipl.-Ing. (FH)

Mahlo GmbH + Co. KG Germany

Donaustr. 12, 93342 Saal/Donau
Contact: Robert Daul
Tel.: +49-9441-601-0
Fax: +49-9441-601-102
info@mahlo.com

Mahlo Italia S.R.L. Italy

Via Fiume 62, 21020 Daverio
Contact: Michel Bruni
Tel.: +39-0332-94-95-58
Fax: +39-0332-94-85-86
mahlo.italia@mahlo.com

Mahlo America Inc. USA

P.O. Box 2825, Spartanburg, S.C. 29304
Contact: Alan Lavore
Tel.: +1-864-576-62-88
Fax: +1-864-576-00-09
mahlo.america@mahlo.com

Mahlo España S.L. Spain

C/ Santa Margarida, s/n - Nave nº13
Poligono Industrial Riera de Caldes - Boada Vell
E08184 Palau Solità i Plegamans (Barcelona)
Contact: Jordi Grass
Tel.: +34-90-20062-30
Fax: +34-90-20062-40
mahlo.espana@mahlo.com

Mahlo Ouest S.P.R.L. Belgium

Quartum Center
Hütte 79 - Bte 10
4700 Eupen
Contact: Manfred Havenith
Tel.: +32-87-59-69-00
Fax: +32-87-59-69-09
mahlo.ouest@mahlo.com

Mahlo de Mexico SA de CV. Mexico

Av. del Iman 580, Edif. La Joya, Depto. 304,
Col. Pedregal de Carrasco, Del. Coyoacán D.F., CP 04700
Contact: Jordi Grass
Tel.: +52-555-606-47-52
Fax: +52-555-606-47-52
mahlo.mexico@mahlo.com

WWW.MAHLO.COM



Quality made
in Germany

60 YEARS
1945
2005
MAHLO

