

INNOVATION

mahlo
trendsetting technology. worldwide.

CEREMAT MMZE-12

Controlled product width and position



CEREMAT MMZE-12





TEXTILE



NONWOVENS



PAPER



PLASTIC

CEREMAT MMZE-12

Controlled product width and position

Product highlights

- ✓ Control of the product to a defined width
- ✓ Control of the product web to a pre-selected position
- ✓ High expansion effect
- ✓ Gentle and uniform expansion effect

Customer benefits

- ✓ Avoiding complaints
- ✓ Improved customer relationship
- ✓ Providing a comparative basis for the quality standard

Problem

Drifting of the webs lateral to the running direction of the product cannot be avoided with the different finishing processes of textile product webs without using appropriate systems. Lattice centring devices are normally used here. With conventional centring devices, split battens with rigid lining are used to expand the product. The product is thereby stretched to different degrees during expansion, more in the middle than at the edges. This causes uneven results during further treatment, for example, during printing.

Solution

The new CEREMAT MMZE offers several advantages at the same time. Using flexible lining on the battens causes the uniform expansion of the product over the entire width of the web (see schematic diagram).

In addition, the new mechanism provides a much larger expanding effect than with the normal centring device; larger variations in width can be compensated for. Crease formation can be completely eliminated.

The desired width and product positions can be set and controlled through the edge sensors. The product enters the machine with the pre-selected position and width and thereby ensures a troublefree process (e.g. intake foulard, sanfor, minimum waste when trimming edges) and high-quality product.

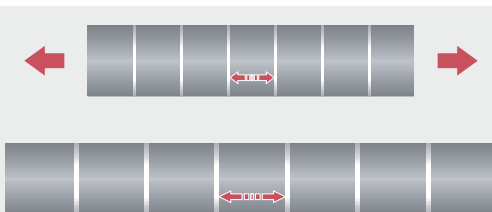
Applications

The CEREMAT MMZE can be employed almost everywhere where product web guidance and defined expansion effects are required. Its capability of controlling exactly to the pre-selected width and position as well as the gentle and even expansion allow its universal employment. It can be used, for example, with:

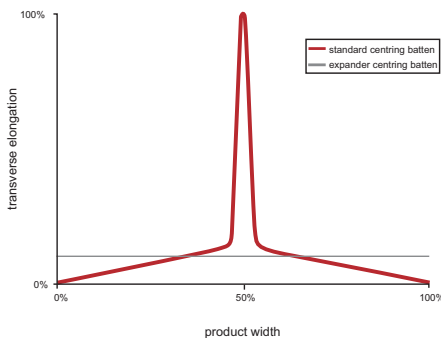
- Printing presses
- Foam machines
- Calendars
- Laminating machines
- And many more

The basic model offers:

- Centring unit with 12 split battens with expander lining
- Two motor-driven adjustable edge sensors to control product width and offset
- Batten adjustment via curved path
- Electrical system and drive unit
- Control software



Schematic diagram: The movably supported expander lining extends uniformly at all points during expansion. The product is stretched uniformly over the entire product width.

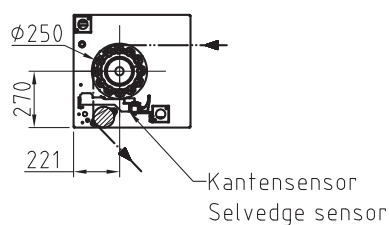
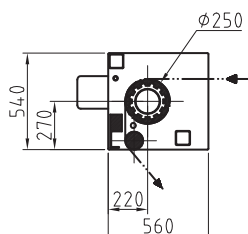
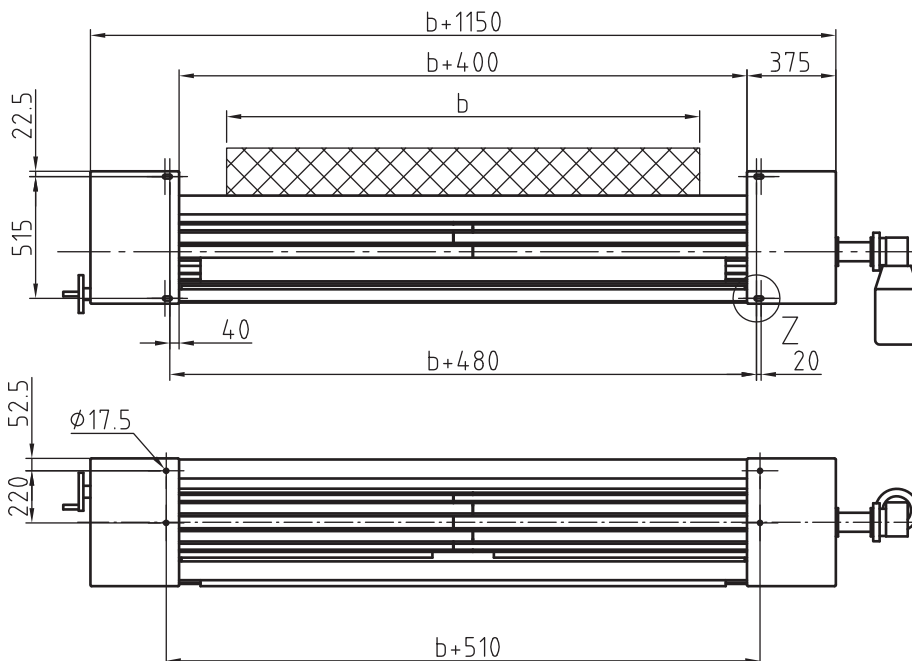


Difference of force distribution on the product between standard and expander centring batten.

TECHNICAL DATA | CEREMAT MMZE

Unit	Ceremat MMZE
Product width	1200 - 3400 mm
Max. product speed	50 m/min
Web force	500 N
Range of correction	± 75 mm per product edge
Max. ambient temperature	0 - 45 °C (without air conditioner)
Supply voltage	230/400 V AC 50 Hz
Control voltage	24V DC
Protection class	IP54
Drive output	Without drive (as strain relief) 0.37 kW, with drive (as strain support) 1.1 kW

Dimensions



CEREMAT MMZE
91-014358

Monitoring and control systems, automation:

MAHLO® GUARANTEES QUALITY. WORLDWIDE, IN YOUR VICINITY.

Best-possible technical support and transfer of know-how are written in capital letters at Mahlo®. Thanks to an international network of agencies and service centres, customers have at their disposal competent support worldwide. We are there for you 365 days a year, 24 hours a day. Just get in touch with us!

- ✓ Over 40 service centres worldwide
- ✓ Prompt service and supply of spare parts within 24 hours
- ✓ Remote diagnostic system
- ✓ Service-hotline: +49-180-5062456



Overall management of Mahlo GmbH + Co. KG
and all subsidiary companies:
Ralf Hopp, Dipl.-Ing. (FH)

Mahlo GmbH + Co. KG Germany

Donaustr. 12, 93342 Saal/Donau
Contact: Ralf Hopp
Tel.: +49-9441-601-0
Fax: +49-9441-601-102
info@mahlo.com

Mahlo Italia S.R.L. Italy

Via Fiume 62, 21020 Daverio
Contact: Michel Bruni
Tel.: +39-0332-94-95-58
Fax: +39-0332-94-85-86
mahlo.italia@mahlo.com

Mahlo America Inc. USA

P.O. Box 2825, Spartanburg, S.C. 29304
Contact: Alan Lavore
Tel.: +1-864-576-62-88
Fax: +1-864-576-00-09
mahlo.america@mahlo.com

Mahlo España S.L. Spain

C/ Santa Margarida, s/n - Nave nº13
Poligono Industrial Riera de Caldes - Boada Vell
E08184 Palau Solità i Plegamans (Barcelona)
Contact: Jordi Grass
Tel.: +34-90-20062-30
Fax: +34-90-20062-40
mahlo.espana@mahlo.com

Mahlo Ouest S.P.R.L. Belgium

Quartum Center
Hütte 79 - Bte 10
4700 Eupen
Contact: Manfred Havenith
Tel.: +32-87-59-69-00
Fax: +32-87-59-69-09
mahlo.ouest@mahlo.com

Mahlo de Mexico SA de CV. Mexico

Av. del Iman 580, Edif. La Joya, Depto. 304,
Col. Pedregal de Carrasco, Del. Coyoacán D.F., CP 04700
Contact: Jordi Grass
Tel.: +52-555-606-47-52
Fax: +52-555-606-47-52
mahlo.mexico@mahlo.com

WWW.MAHLO.COM



Quality made
in Germany

1945
2005
60 YEARS
MAHLO

