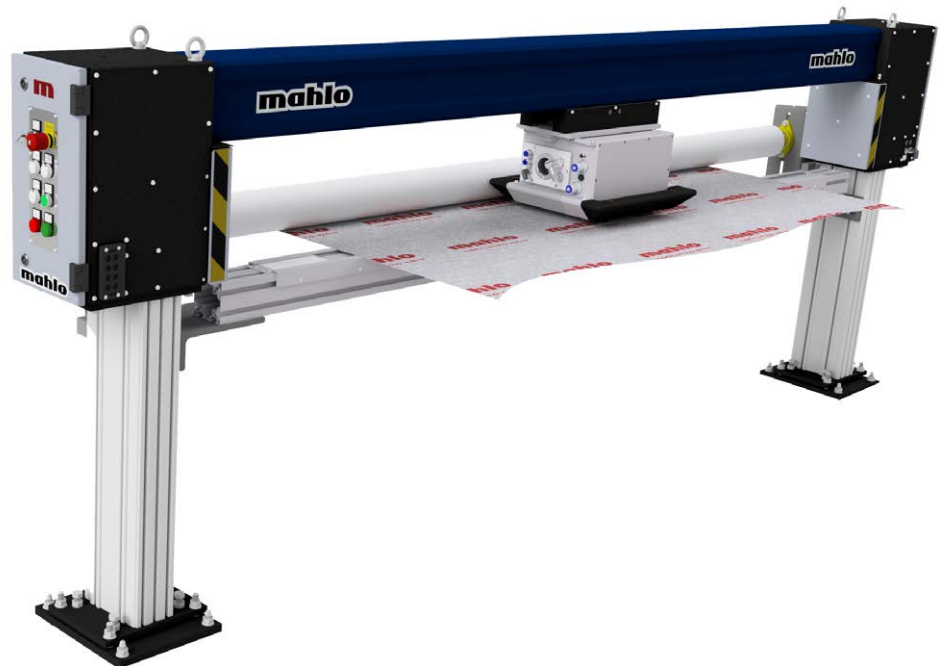


## Uniscan XS-II

### Single-sided scanner for small widths

The Uniscan traversing scanners are the single-sided counterpart to the double-sided O-frames of the WebPro series. They are specially designed to accommodate the single-sided sensors of the Mahlo QMS family. This single-sided arrangement enables the frame to be easily retrofitted to existing systems, with the measuring sensors arranged above, below or at the side of the measuring frame.



The Uniscan XS-II accommodates one sensor for web widths from 0.2 to 2.2 m. The compatible design and use of precision linear slides permit installation even in restricted spaces.

### Area of application

- Processing of webs from 0.2 - 2 m width
- Laboratory Coating
- Coating of textiles
- Coating of paper
- Coating of film
- Production of imitation leather
- Extrusion coating



#### Customer benefits

- *Intelligent scanning frame with integrated real-time computer*
- *Extremely rugged, mechanical construction assures troublefree operation and long service life*
- *Maintenance-friendly design*



### Product highlights

- 1 sensor and up to 2.2 m product width
- Easy to install and connect
- A minimum of upkeep and maintenance costs, along with high availability and long service life
- The ultra-precise carriageguide mechanism guarantees really accurate measurements from the various sensors

### Options

With / without base frame; different mounting positions of the sensor head

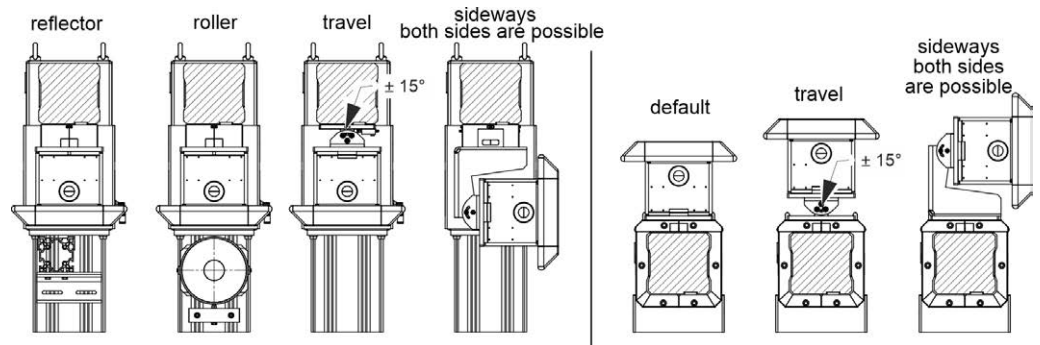


Fig. 1: Variants sensor head mounting

### Dimensions

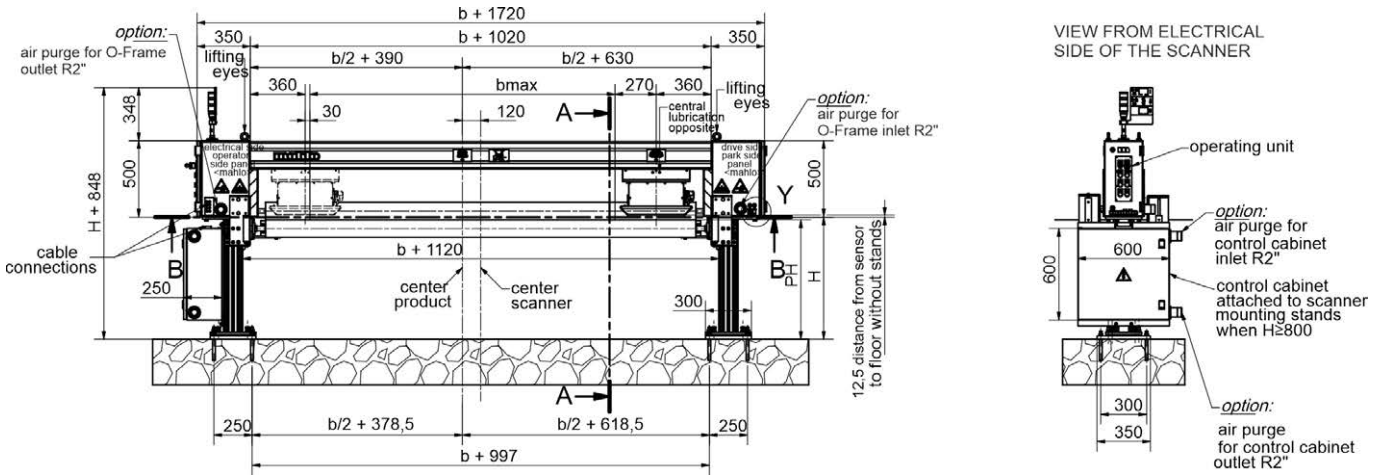


Fig. 2: Uniscan XS-II Dimensioned drawing (Detail 91-021000-01)

### Technical data

Unit	Nominal product width [mm]		Number Sensors	Temperature range (without Cooling) [°C]
	minimum	maximum		
Uniscan XS-II	200	220	1	5 - 45

Qualiscan QMS-12 / Uniscan XS-II 08/2022 Uniscan XS-II 84-010521-001-en