

Upgrade Orthopac RVMC-12 to Orthopac RVMC-15

Straightener technology of the latest generation



Upgrade Orthopac
RVMC-12 to Orthopac
RVMC-15

UPGRADE ORTHOPAC RVMC-12 ZU RVMC-15

Overview

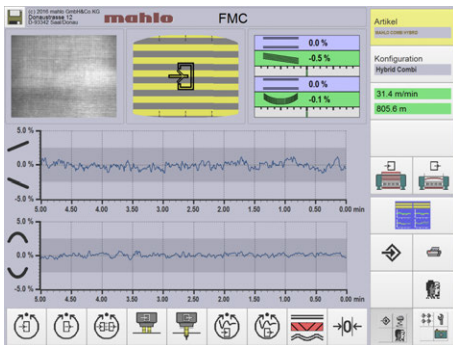
The Orthopac RVMC straightener belongs to the best-sellers from Mahlo. Tens of thousands of these machines are still in use worldwide. Due to their robust design, many of these machines are in good mechanical condition. The machine generation 15 is without doubt the highlight in straightening the textile surface. State-of-the-art electronics, future-oriented control algorithms and all the necessary requirements to set the course for success in the Internet of Things or Industry 4.0. The prerequisite: An upgrade from Generation 12 (built between 2003 and 2014) to Generation 15 to ensure that we can continue to provide optimum support for our customers' existing machines and that they can continue to operate in proven Mahlo quality for a long time to come.

Welcome to the New Power Generation

With this upgrade, we are upgrading the electronic control technology of the Orthopac RVMC-12 devices to the current B&R Generation 15 controller. A great added value for the customer is the sensitive fabric tension control, which always keeps the fabric tension as low as possible.

- Automatic adaptation of the control parameters to the web speed
- Automatic adaptation of the control parameters to the scanner damping
- Optimized response time even with the utilization of the new straightening concept
- Improved actuator technology for faster and gentler straightening results
- Additional diagnostic and configuration tools

Visualization



When visualizing the G 15 machines, all relevant parameters can be displayed in a freely configurable way. This lets the user view all of his key values at the same time. This sharpens the attention of the operator. And: Quality always remains visible.

RVMC-15 User Interface

What is being converted?

- Actuators hydraulic and electric
- Web tension control
- Spreading device, entry
- Spreading device, exit
- user-friendly visualization

Fit for Industry 4.0



In order to enable the immediate interaction of machines, data must be exchanged reliably and easily configurable via secure communication. With the Generation 15 upgrade, the customer can access the machine not only from anywhere – provided an Internet connection is available. Customers also have the option of connecting any machine to the network via an OPC UA server – i.e. an interface for software from different manufacturers – with the fitting connectivity.

Networking

- Communication between machines and operators

Transparency

- Data available online, including historical data

Technical support

- Remote service by service technicians from Saal or by local sales partners

Decentralised decisions

- Online control of important parameters directly at the production machine

Take advantage of the benefits of the upgrade package today



- ✓ Secured spare parts supply for the future
- ✓ Improved and future-proof technology (e.g. optimized control loop)
- ✓ Integration of older machine generations into the existing setup
- ✓ Sustainability of production by upcycling existing machines
- ✓ Increased efficiency

Stay one step ahead of the competition – with Mahlo!



Your point of contact for the upgrade

Please contact us!

Our experts will gladly assist you. Of course, free of charge and without any obligation.

Thomas Höpfl, Sales Director

@ thomas.hoepfl@mahlo.com

☎ +49 9441 601 121

Monitoring and control systems, automation

MAHLO GUARANTEES QUALITY. WORLDWIDE, IN YOUR VICINITY.

Best-possible technical support and know-how transfer are written in capital letters at Mahlo. Thanks to an international network of agencies and service centres, customers have at their disposal competent support worldwide. We are there for you. Just get in touch with us!

- ✓ Service partners in over 100 countries
- ✓ Direct on-site service and fast delivery of spare parts
- ✓ Remote diagnostic system
- ✓ Service Hotline: +49-180-5062456
- ✓ WWW.MAHLO.COM



Mahlo GmbH + Co. KG - Germany

Donaustr. 12
93342 Saal / Donau
Telephone: +49-9441-601-0
Fax: +49-9441-601-102
Email: info@mahlo.com

Mahlo Italia S.R.L. - Italy

Via Fiume 62
21020 Daverio
Telephone: +39-0332-94-95-58
Fax: -
Email: mahlo.italia@mahlo.com

Mahlo America Inc. - USA

575 Simuel Road
Spartanburg S.C. 29304
Telephone: +1-864-576-6288
Fax: -
Email: mahlo.america@mahlo.com

Mahlo Ouest S.R.L. - Belgium

Quantum Center
Hütte 79 - Bte 10
4700 Eupen
Telephone: +32-87-59-69-00
Fax: +32-87-59-69-09
Email: mahlo.ouest@mahlo.com

Mahlo España S.L. - Spain

Calle Luxemburgo nº 4
08303 Mataro (Barcelona)
Telephone: +34-938-640-549
Email: mahlo.espana@mahlo.com