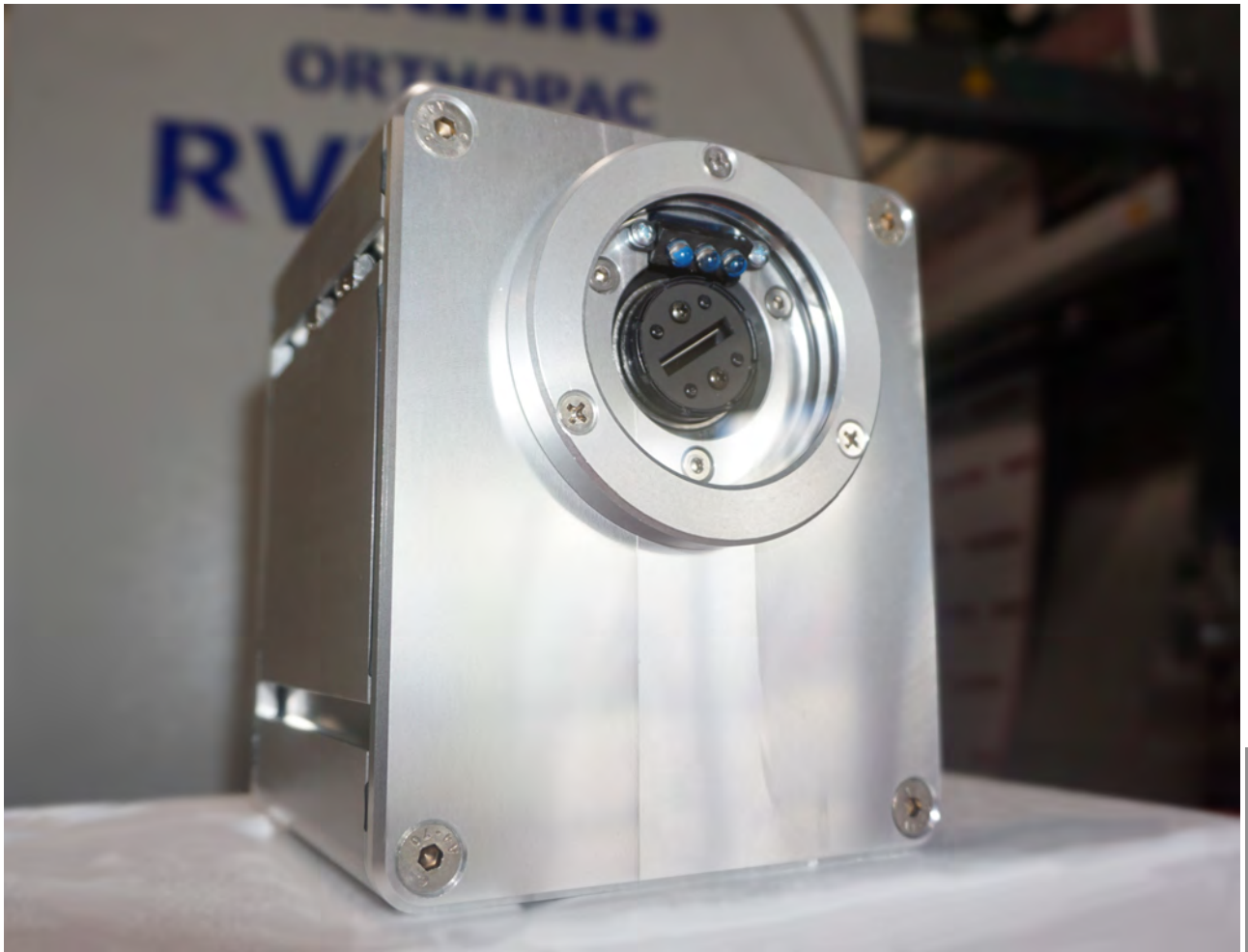


# Mahlo Scanners

Top performance in a dangerous environment



Mahlo Scanners



## CORROSION PROTECTION OF MAHLO SCANNERS

Acid absorption, high humidity, aggressive chemicals: Life is not easy for machine components in the textile finishing industry. Mahlo has identified the demands of the market and has used its over 70 years of experience to optimise the individual components for exactly this kind of environment.



*Test series corrosion resistance*

### The appropriate protection for every setting

According to the purpose, the customer can choose between the standard version and additional options: With "Full Protection", additional drop pans ensure that the scanners do not get into contact with aggressive substances in the first place.

With the motorised scanner adjustment, the roller cassette is also made from stainless steel. Mahlo uses solely 1.4301 stainless steel.



#### **Product highlights**

- ✓ *Stainless steel locking bolts*
- ✓ *Hard-anodised guide rails*
- ✓ *Plastic plain bearings*
- ✓ *Stainless steel supports*
- ✓ *Anodised aluminium case*
- ✓ *Stainless steel carriers*
- ✓ *Stainless steel bolts in web area*



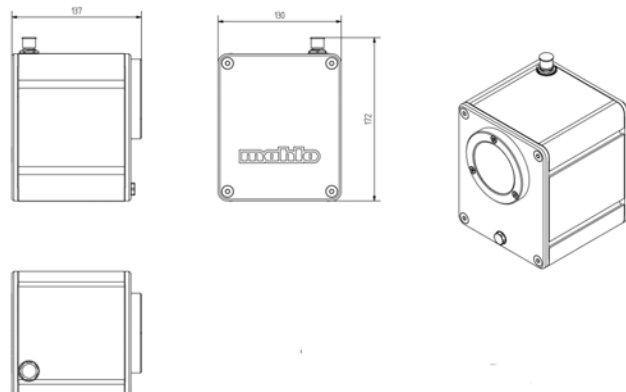
#### **Customer benefits**

- ✓ *Longer service life*
- ✓ *Less service visits*
- ✓ *Higher reliability*
- ✓ *Better accuracy*

## Technical Data

Distortion detection	Scanners
Scanning	Scanners <ul style="list-style-type: none"> <li>■ TK</li> <li>■ CK</li> <li>■ Hybrid (TK + CK)</li> <li>■ CTK</li> </ul>
Signal generation	Photoelectrical measurement with oscillating lens (2 – 12 scanners) and image projection (2 – 8 scanners) Two-sided scanning, angle resolution: 0.1° Detects weft threads (up to 200 threads/cm) and patterns
Optics	Fixed focus (no adjustment required)
Illumination	Infrared LED illumination: Transmitted light, reflex light and flash lighting with automatic intensity adjustment
Signal processing	DSP, microcontroller and IPC in real-time Visualisation via IPC and touchscreen
Automatic control	Software controller, PID type, speed-dependent, separate skew and bow component
Display and operation	Touchscreen colour monitor with selectable screen pages; main page: Distortion graphic, histogram and additional numeric distortion display; various service screens
Product speed	0 – 250 m/min
IP protection class of scanners	IP 67 (dust and water spray-protected)
Options	Corrosion protection and cooling

## Technical Drawing



Monitoring and control systems, automation

# MAHLO GUARANTEES QUALITY. WORLDWIDE, IN YOUR VICINITY.

**Best-possible technical support and know-how transfer are written in capital letters at Mahlo. Thanks to an international network of agencies and service centres, customers have at their disposal competent support worldwide. We are there for you 365 days a year, 24 hours a day. Just get in touch with us!**

- ✓ Over 40 service centres worldwide
- ✓ Service partners in over 100 countries
- ✓ Direct service and spare parts delivery within 24 hours
- ✓ Remote diagnostic system
- ✓ Service Hotline: +49-180-5062456



**Mahlo GmbH + Co. KG - Germany**

Donastr. 12  
93342 Saal / Donau  
Telephone: +49-9441-601-0  
Fax: +49-9441-601-102  
Email: info@mahlo.com

**Mahlo Italia S.R.L. - Italy**

Via Fiume 62  
21020 Daverio  
Telephone: +39-0332-94-95-58  
Fax: +39-0332-94-85-86  
Email: mahlo.italia@mahlo.com

**Mahlo America Inc. - USA**

575 Simuel Road  
Spartanburg S.C. 29304  
Telephone: +1-864-576-62-88  
Fax: +1-864-576-00-09  
Email: mahlo.america@mahlo.com

**Mahlo Ouest S.P.R.L. - Belgium**

Quantum Center  
Hütte 79 - Bte 10  
4700 Eupen  
Telephone: +32-87-59-69-00  
Fax: +32-87-59-69-09  
Email: mahlo.ouest@mahlo.com

**Mahlo España S.L. - Spain**

Calle Luxemburgo nº 4  
08303 Mataró (Barcelona)  
Telephone: +34-938-640-549  
Email: mahlo.espana@mahlo.com

**Mahlo Shanghai Rep. Office - China**

Bldg 2, 569 Hua Xu Road  
Xu Jing Town  
Shanghai 201702  
Telephone: +86-1390-1804736  
Fax: -  
Email: frank.feim@mahlo.com

**WWW.MAHLO.COM**

mInfo TK Corrosion protection 84-500005, 1, en\_GB

07/2019 Subject to revision!

© 2019 Mahlo GmbH + Co. KG



Quality made  
in Germany